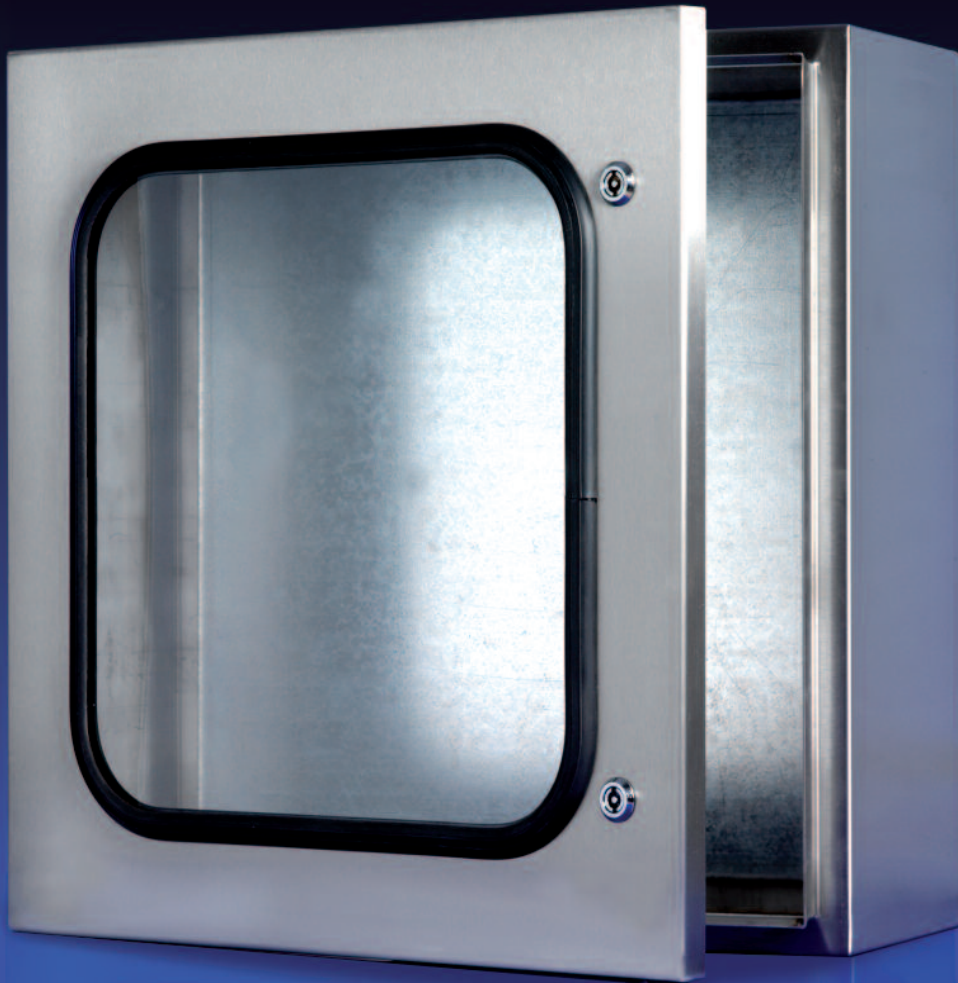


# *Lasnek*

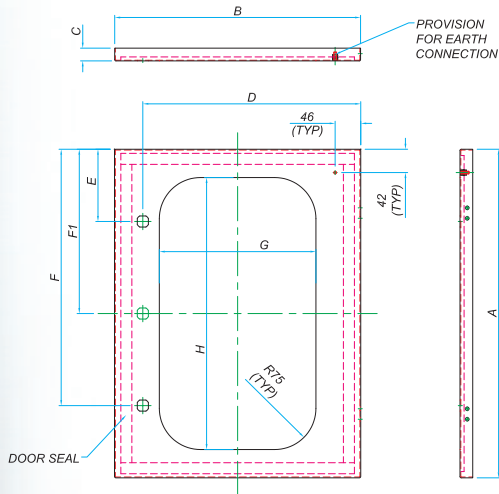
## STAINLESS STEEL VIEWING PANEL COMPACT ENCLOSURES



- Stainless Grade 304 / 1.4301
- Material Thickness 1.2/1.5mm
- Satin Brush Finish
- Perspex Viewing Window
- Bespoke Service Available
- IP65
- BS EN60529:1992
- Concealed Hinges
- Galvanized Backplate
- Pin Lock & Key

# VIEWING PANEL ENCLOSURES TECHNICAL DATA

## KCC-VP DOOR DIMENSIONS

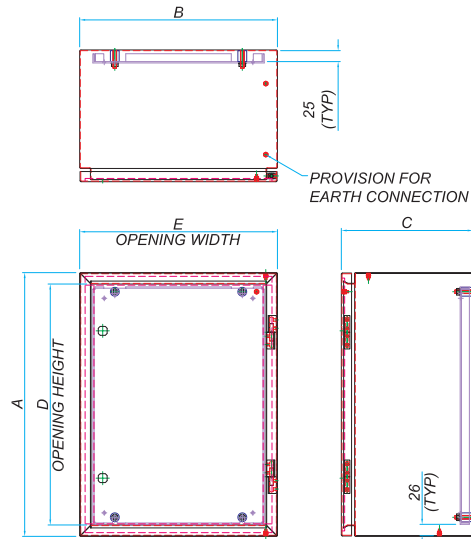


NOTE: - ALL VIEWING PANELS ARE CENTRAL TO THE DOOR

	A	B	C	D	E	F	F1	G	H
KCC-05-VP	448	448	23	397	N/A	N/A	224	285	345
KCC-07-VP	598	448	23	397	131.5	466.5	N/A	285	495
KCC-08-VP	598	598	23	547	131.5	466.5	N/A	435	495
KCC-09-VP	748	448	23	397	131.5	616.5	N/A	285	645
KCC-10-VP	748	598	23	547	131.5	616.5	N/A	435	645
KCC-11-VP	748	748	23	697	131.5	616.5	N/A	585	645
KCC-12-VP	998	498	23	447	131.5	866.5	N/A	335	895
KCC-13-VP	998	748	23	697	131.5	866.5	N/A	585	895
KCC-14-VP	998	998	23	947	131.5	866.5	N/A	835	895

NOTE: HINGED ON THE RIGHT UNLESS OTHERWISE STATED. CUT OUTS MAY HIND THE DOOR.  
NOTE: ALL DIMS ARE IN mm WITH A TOLERANCE +/- 2mm

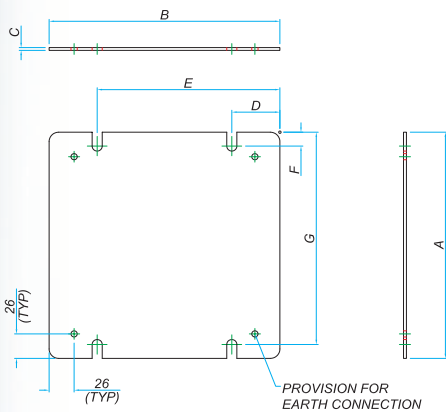
## KCC-05-VP and KCC-07-VP TO KCC-14 CABINET DIMENSIONS



	A	B	C	D	E
KCC-05-VP	538	450	200	399	399
KCC-07-VP	600	450	300	548	398
KCC-08-VP	600	600	300	548	548
KCC-09-VP	750	450	300	698	398
KCC-10-VP	750	600	300	698	548
KCC-11-VP	750	750	300	698	698
KCC-12-VP	1000	500	300	948	448
KCC-13-VP	1000	750	300	948	698
KCC-14-VP	1000	1000	300	948	948

NOTE: HINGED ON THE RIGHT UNLESS OTHERWISE STATED. CUT OUTS MAY HIND THE ENCLOSURE.  
NOTE: ALL DIMS ARE IN mm WITH A TOLERANCE +/- 2mm

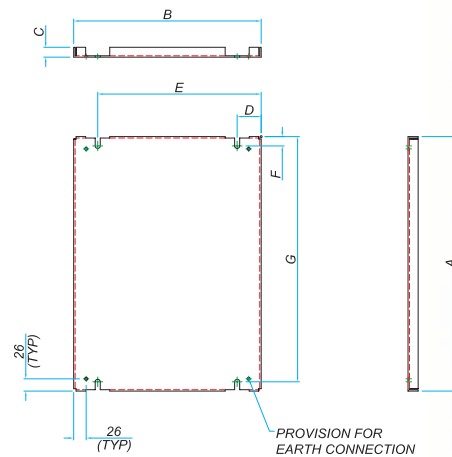
## KCC-05-VP BACKPLATE DIMENSIONS



	A	B	C	D	E	F	G
KCC-05-VP	390	390	3	50	340	15	375

NOTE: ALL DIMS ARE IN mm WITH A TOLERANCE +/- 2mm

## KCC-07-VP TO KCC-14-VP BACKPLATE DIMENSIONS



	A	B	C	D	E	F	G
KCC-07-VP	540	390	21	50	340	15	525
KCC-08-VP	540	540	21	50	490	15	525
KCC-09-VP	690	390	21	50	340	15	675
KCC-10-VP	690	540	21	50	490	15	675
KCC-11-VP	690	690	21	50	640	15	675
KCC-12-VP	940	440	21	50	390	15	925
KCC-13-VP	940	690	21	50	640	15	925
KCC-14-VP	940	940	21	50	890	15	925

NOTE: ALL DIMS ARE IN mm WITH A TOLERANCE +/- 2mm

# Lasnek

Lasnek, 1 President Way, Luton, Bedfordshire LU2 9NR  
Tel: +44 (0) 1582 425777 • Fax: +44 (0) 1582 425776

email: sales@lasnek.com www.lasnek.com